

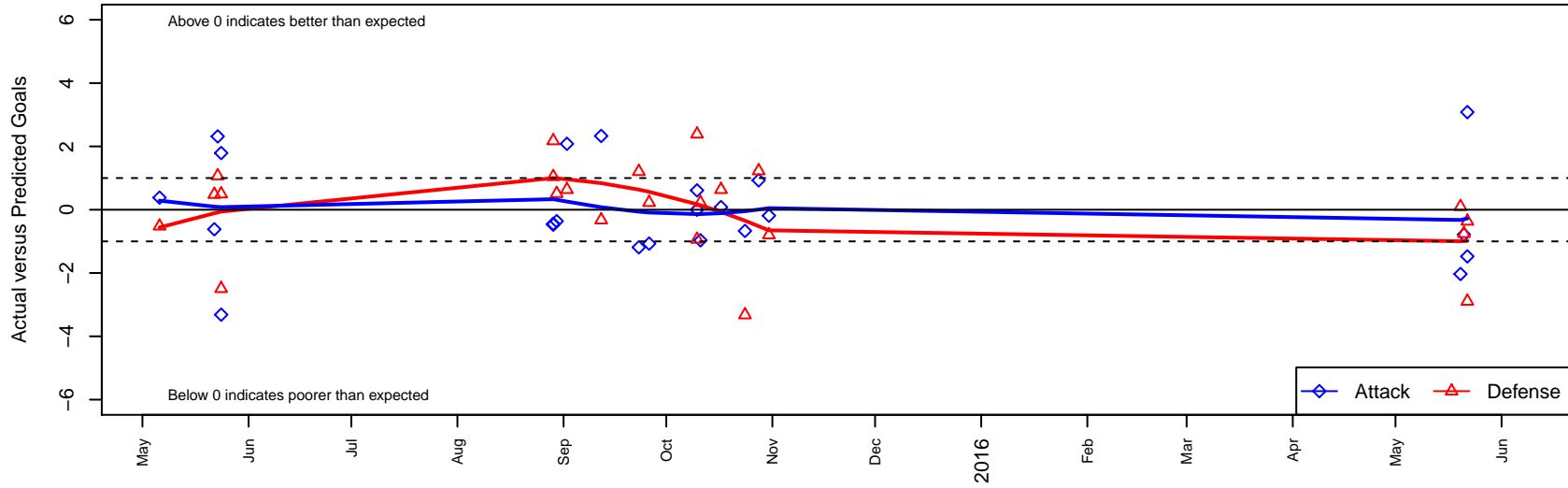
Idaho Rush White B02

Idaho Rush Soccer
 Boise, ID
 B02 total strength=837
 attack=1.36 defense=0.95
 fall league = Idaho D3 A U13

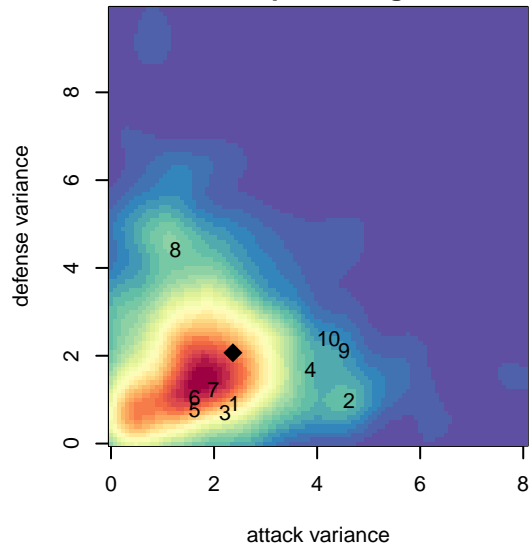
alt names used:
 IDAHO RUSH PREMIER
 IDAHO RUSH WHITE (ID)
 IDAHO RUSH WHITE (ID)

Venues played:
 2014 Spr Idaho D3 A U12
 2014 ID State Cup U12
 2015 NWCL U13 U13
 2015 Idaho D3 A U13
 2015 ID Directors Cup U13 Gold U13

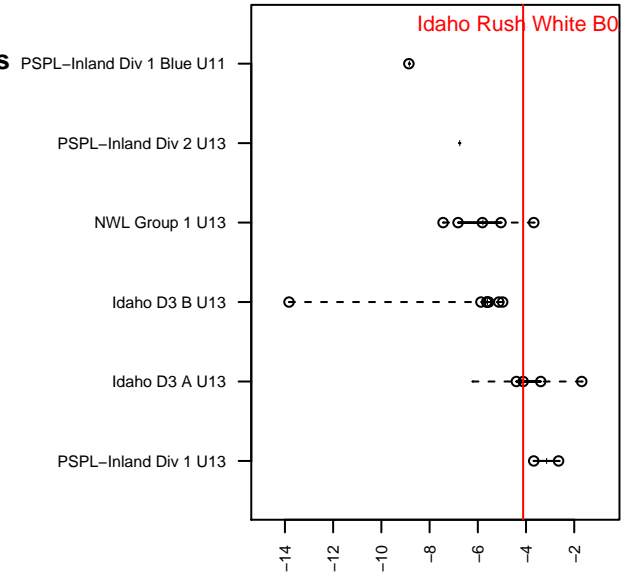
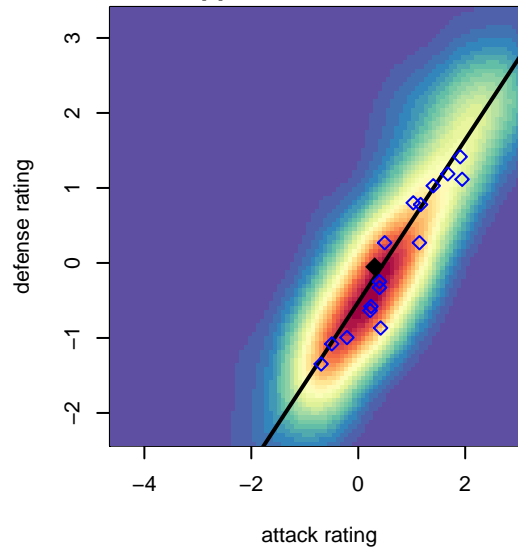
Idaho Rush White B02
 Dots are actual minus expected GF (blue circles) and GA (red triangles).
 Blue line is smoothed change in attack strength. Red is smoothed change in defense strength.



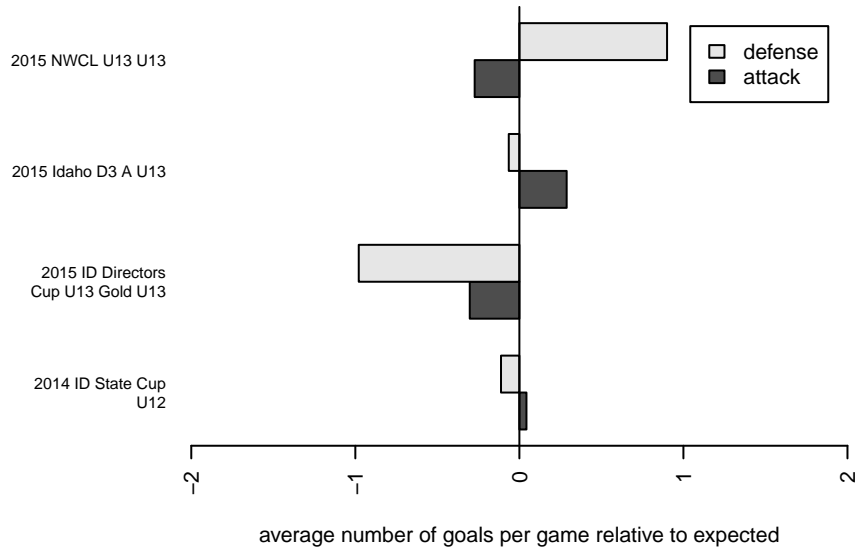
**attack and defense variance (black dot)
relative to other teams
and top 10 in region**



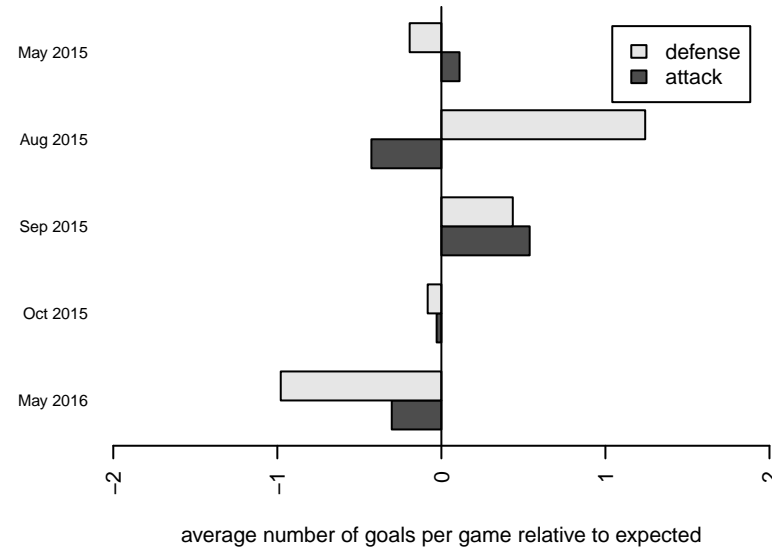
**attack and defense rating
relative to others at age
and all opponents in last 13 months**



Performance relative to 13 month average



Performance relative to 13 month average



| date | home | | away | | venue | pred.home | pred.away |
|------------|----------------------------------|----|-------------------------------------|---|------------------------------------|-----------|-----------|
| 2016-05-22 | Idaho Rush White B02 | 1 | Soccer Xpress Tigers Ontario B02 | 4 | 2015 ID Directors Cup U13 Gold U13 | 2.48 | 1.11 |
| 2016-05-22 | Boise Nationals Dortmund B02 | 1 | Idaho Rush White B02 | 7 | 2015 ID Directors Cup U13 Gold U13 | 0.64 | 3.92 |
| 2016-05-21 | Idaho Rush White B02 | 1 | Idaho Rush Black B02 | 2 | 2015 ID Directors Cup U13 Gold U13 | 1.79 | 1.24 |
| 2016-05-20 | Idaho Rush White B02 | 1 | Boise Nationals Barcelona White B03 | 1 | 2015 ID Directors Cup U13 Gold U13 | 3.03 | 1.10 |
| 2015-10-31 | FC Nova SuperNova Black B02 | 2 | Idaho Rush White B02 | 1 | 2015 Idaho D3 A U13 | 1.20 | 1.19 |
| 2015-10-28 | Idaho Rush White B02 | 3 | Idaho Storm White B02 | 0 | 2015 Idaho D3 A U13 | 2.07 | 1.23 |
| 2015-10-24 | Boise Nationals Bayern B02 | 6 | Idaho Rush White B02 | 0 | 2015 Idaho D3 A U13 | 2.68 | 0.67 |
| 2015-10-17 | Idaho Rush White B02 | 4 | Boise Nationals Dortmund B02 | 0 | 2015 Idaho D3 A U13 | 3.92 | 0.64 |
| 2015-10-11 | THUSC Beryllium Black B02 | 3 | Idaho Rush White B02 | 0 | 2015 NWCL U13 U13 | 3.22 | 0.97 |
| 2015-10-10 | Idaho Rush White B02 | 1 | Crossfire Premier A B03 | 7 | 2015 NWCL U13 U13 | 0.39 | 6.06 |
| 2015-10-10 | Crossfire Premier A 2002B | 10 | Idaho Rush White B02 | 0 | 2015 NWCL U13 U13 | 12.39 | 0.00 |
| 2015-09-26 | Idaho Storm White B02 | 1 | Idaho Rush White B02 | 1 | 2015 Idaho D3 A U13 | 1.23 | 2.07 |
| 2015-09-23 | Idaho Rush White B02 | 0 | FC Nova SuperNova Black B02 | 0 | 2015 Idaho D3 A U13 | 1.19 | 1.20 |
| 2015-09-12 | Idaho Rush White B02 | 3 | Boise Nationals Bayern B02 | 3 | 2015 Idaho D3 A U13 | 0.67 | 2.68 |
| 2015-09-02 | Boise Nationals Dortmund B02 | 0 | Idaho Rush White B02 | 6 | 2015 Idaho D3 A U13 | 0.64 | 3.92 |
| 2015-08-30 | Idaho Rush White B02 | 0 | WPFC Black B02 | 5 | 2015 NWCL U13 U13 | 0.36 | 5.51 |
| 2015-08-29 | SSC Shadow A B02 | 1 | Idaho Rush White B02 | 0 | 2015 NWCL U13 U13 | 3.18 | 0.47 |
| 2015-08-29 | Idaho Rush White B02 | 0 | Wenatchee Fire Black B02 | 4 | 2015 NWCL U13 U13 | 0.44 | 5.04 |
| 2015-05-24 | Sting SC Leeds United B02 | 3 | Idaho Rush White B02 | 1 | 2014 ID State Cup U12 | 0.51 | 4.32 |
| 2015-05-24 | Idaho Rush White B02 | 6 | Idaho Rush Blue B02 | 0 | 2014 ID State Cup U12 | 4.21 | 0.50 |
| 2015-05-23 | Idaho Rush White B02 | 6 | Idaho Inferno B02 | 0 | 2014 ID State Cup U12 | 3.68 | 1.07 |
| 2015-05-22 | Boise Nationals Bayern Black B02 | 2 | Idaho Rush White B02 | 0 | 2014 ID State Cup U12 | 2.48 | 0.62 |
| 2015-05-06 | Boise Nationals Bayern Black B02 | 3 | Idaho Rush White B02 | 1 | 2014 Spr Idaho D3 A U12 | 2.48 | 0.62 |